

A uniquely flexible lifestyle

The X95 elegantly fuses architectural innovation with all of Princess Yachts' familiar characteristics of quality in craftsmanship and materials, interior design, and innovation in technology.

As the eagerly anticipated slot 1 of the new X95 nears completion in the Plymouth based facility we look at what sets this innovative new yacht apart from the pack and take a sneak preview at the finished article.

The brand-new Princess X95 is conceived like no other vessel before. Whilst the Y85 sets a new benchmark for classic motor yacht design and the ground-breaking R35 challenges the perceived limits of performance, comfort and handling in a yacht, the X95 re-defines the practical potential and lifestyle options aboard with a complete re-think of yacht architecture.

Characterised by beautifully sculpted surfaces, with long flowing lines that extend from bow to stern, the X95 defines a striking design language for a new concept of boat while maintaining classic Princess design cues. It is a powerful example of form following function, combined with elegant design elements such as the ribbon-like flying buttresses that reach from the rear, visually and physically connecting the flybridge to the Sky Lounge.

Designed with an 'open concept' in mind, the X95 is the first model in the new X Class. Challenged with setting a new standard of layout excellence, which is defined by large, adaptable spaces that can be used and formatted in numerous ways, it offers the owner and guests a uniquely flexible boating lifestyle. Spatial layout is therefore instantly class-leading, highly practical and user friendly. The interior design layout allows the owner to define each journey around their guests' preferences - comfortable and relaxing, high levels of privacy, or entertaining and hosting, for example. Both the flybridge and main deck interior space cover almost the full length of the yacht, creating the Super Flybridge - the X Class's defining characteristic. This new layout provides 10% more outdoor space and 40% more indoor space than a traditional motor yacht.





Creating this class-defining yacht from Princess's design brief was the work of their long-standing naval architect, Olesinski, in partnership with legendary Italian design house Pininfarina SpA. Having delivered the styling for the revolutionary R35, Pininfarina worked in collaboration with Olesinski to craft a statement yacht focused on adventure – the ultimate in contemporary yet highly functional yacht design.

Life on-board an X95 is unlike that on any other boat its size. It is built for a life at sea, and focused on those who wish to spend significant time aboard to explore cruising grounds further afield. On boarding the boat via the large teak-laid transom deck platform at the stern, a pair of distinctive stairways immediately lead up to a huge cockpit, before the entrance to the main deck saloon begins the jaw-dropping experience of life aboard the first ever Princess X Class.

The lengthening of the main deck to the bow of the boat has created an unprecedented space, with almost 18 metres (59 feet) of uninterrupted run through the social areas of the main deck. This large, open space, flooded with light by full height port and starboard glazing, can be configured in a traditional fashion, as it is on slot 1, with an impressive sofa and coffee table area

(complete with a servery unit), integrated drinks refrigerator and icemaker, a private galley, and a unique master cabin with 270° panoramic tinted, toughened glass windows. A customer could also choose to configure the X95 with entertainment as a focus, replacing the stateroom with a cinema lounge.

Alternatively, the X95 will also offer a more informal layout, with a single large open space that encompasses a large saloon area, a full width open-plan chef's kitchen with a large centre island and breakfast bar, and a connected dining or recreation area with 270° views to port, starboard and the bow. The impression upon entering the saloon and seeing right through to the forward-facing window almost 60 feet away is an experience akin to a megayacht.

[Watch the development story here](#)



Left: The spacious saloon. **Clockwise:** Forward of the saloon area with stairs leading to the skylounge and lower deck; enclosed galley option with access to the port side deck.

“The X95 is another bold new concept for Princess. Borne from our aggressive investment strategy into new technology and world-class design, the X Class creates an entirely new segment, representing a significant step in our new product programme. We continue to push the boundaries of yacht design and build a brand leadership position in the luxury yacht market.” - Antony Sheriff, CEO



Walk up the internal staircase to the flybridge from the deck saloon and another unique experience awaits: the fully enclosed and climate-controlled Sky Lounge which also houses the pilothouse. The pilothouse can be fully enclosed with sliding doors and features a leather upholstered electric seat with six-way fore, aft and height adjustment and the option for an additional navigator seat. Just behind it is the large lounge area with soft seating, teak flooring and commanding panoramic views. The Sky Lounge leads out to an enormous aft flybridge area with a covered dining zone for eight and a large flexible space for free-standing lounge furniture.

Exit from the Sky Lounge's side door (or walk along the flybridge's side deck) and it leads to a spacious forward flybridge with a sumptuous U-shaped seating and sunbathing area with the option of a spa bath further towards the bow. In total, the Super Flybridge stretches almost 22 metres (72 feet), more than double the length of a typical flybridge on a yacht of this size.

Yet intimate spaces are also considered. Walking down the steps at the forward end of the flybridge reveals a foredeck area that could be used as a private breakfast space whilst at anchor.

Discover the virtual tour here

This page: The skylounge and 'super' flybridge with dining area, the cockpit area on the main deck.

Right clockwise: Enclosed pilothouse within the skylounge shown with optional navigators seat; foredeck area with U-shaped seating, coffee table and storage locker; a sunbathing area sits forward of the skylounge with a large seating area and sunpad which converts to aft facing U-shaped seating area.



At a glance...

95' 4" / 29 m	24 knots
Length Overall	Maximum Speed
560 nm	13,400 litres
Range at 16 knots	Fuel capacity
112 tonnes	10 guests
Displacement	Accommodated in
(half load)	5 cabins





On the lower deck, guests are accommodated across four well-appointed cabins comprised of a full-beam Master Stateroom, situated mid-ship, with a large double bed, bedside tables, portside sofa, coffee table and en suite bathroom. Additional port and starboard guest cabins can each be configured as two single beds or one double bed, both with en suite bathrooms. Towards the bow lies the Forward Stateroom complete with large double bed, walk-in wardrobe and en suite bathroom. The crew area has also been well considered with crew quarters, bathroom and a mess to the rear.

In addition to the X95's innovative architecture Princess has made significant steps forward in hull design and the X95 is equipped with an all-new wave-piercing bow that extends the waterline forward and provides a fine, high deadrise entry. The benefits of this bow shape are further enhanced by extending the hull surfaces aft under the bathing platform. The result is a hull that offers superb stability in all sea conditions and transitions smoothly from highly efficient low cruising speeds to maximum speed whilst maintaining optimum trim angle and ride comfort in all conditions. The hull delivers a 15% improvement in efficiency when compared to a traditional hull design. To achieve this result, machine learning methods were applied to computational fluid dynamics results to select the optimum design parameters for the X95, leading to a transformation of the well-proven qualities of a deep-V hull improving efficiency across the speed range whilst ensuring the highest levels of sea-keeping and predictable handling synonymous with Princess Yachts.

Princess has created a striking new design that embraces the revolutionary architecture of the X95. Pooling such a rare depth and breadth of experience in design, Princess and its partners have delivered a unique yacht that is immediately identifiable as a Princess and yet is instantly appreciated as something game changing on the water.

This page: The main deck master stateroom on-board the first X95 has had the 270 ° window replaced with a television and bookshelf arrangement to suit the owner's needs; the large dressing table unit positioned on the starboard side of the main deck.

Right, clockwise: The lower deck master stateroom on hull 1 features a unique optional arrangement with a gym fitted on the starboard side; the forward VIP cabin and port twin cabin.



GENERAL ARRANGEMENTS

Flybridge:

The flybridge extends along almost the entire length of the boat. A large dining area sits alongside two wetbars positioned aft of the skylounge, further complimented by an aft seating area with additional free-standing furniture. A U-shaped seating area is positioned forward of the skylounge with convertible sunpad and steps down to the foredeck seating area.

Optional flybridge layout one:

A spa bath is available forward on the flybridge deck with alternative seating area aft and additional storage on the port sidedeck. A day head can be fitted within the skylounge on the portside.

Optional flybridge layout two:

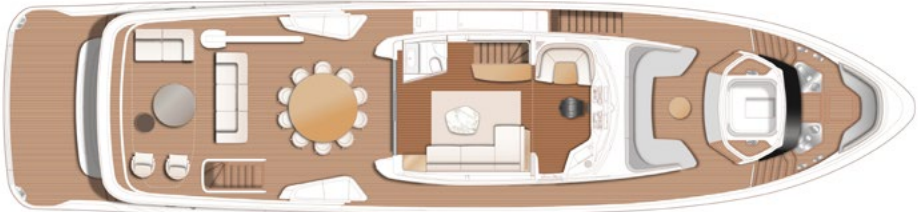
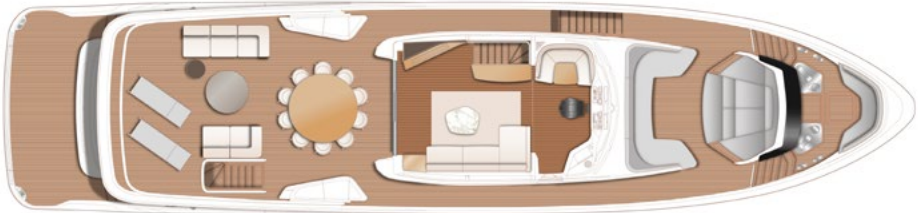
A spa bath is fitted forward on the flybridge deck with alternative seating and free standing furniture aft. A crane is positioned aft and additional storage is provided on the port sidedeck. A day head is fitted within the skylounge on the portside.

Main deck:

The expansive main deck layout includes a large sofa area to port with rise and fall television opposite. The open galley arrangement includes a forward dining area and island galley unit with three bar stools.

Optional main deck one:

The L-shaped seating area faces two free standing chairs with two-seater sofa opposite. Moving forward, an additional smaller seating area is available with bar opposite leading to the enclosed galley. The master stateroom is positioned forward on the main deck with an en-suite bathroom, breakfast table area with arm chairs and dressing table to starboard. The cockpit is arranged with coffee table and free-standing chairs and extended wet bar.



Optional main deck two:

This arrangement features an L-shaped seating area with free standing chairs and sofa opposite. An additional seating area is fitted opposite a dining table which seats four people. The enclosed galley is aft of the master stateroom with en-suite bathroom, chaise longue area and dressing table.

Optional main deck three:

A large dining table is positioned starboard with bar area adjacent. The enclosed galley is aft of a full-beam cinema room with L-shaped seating area, free-standing furniture, Dolby Atmos equipment package and 82” television installed.

Lower Deck:

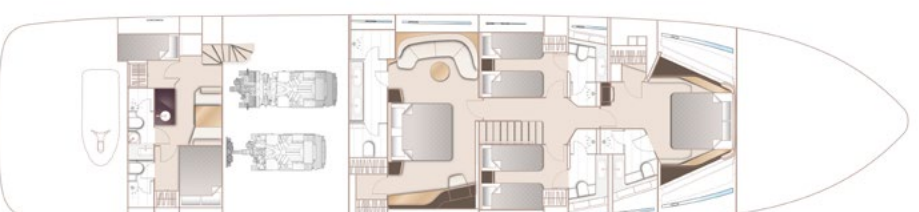
A full beam master stateroom with en-suite bathroom, large sofa, dressing table and dressing area with wardrobe space. Twin guest cabins are fitted mid-ships whilst a large forward stateroom includes an en-suite bathroom, dressing table and television. Crew quarters with crew mess, captain’s cabin with double bed and en-suite, twin bunk cabin and bathroom.

Lower Deck option one:

A full beam master stateroom with en-suite bathroom, breakfast area, dressing table and dressing area with wardrobe space. Twin guest cabins fitted mid-ships and a large forward stateroom. Crew quarters with three cabins and two bathrooms: port cabin with single bed and starboard cabins with bunk beds.

Lower Deck option two:

A full beam master stateroom with en-suite bathroom, large sideboard and chair, dressing table and dressing area with wardrobe space. Twin guest cabins fitted mid-ships and a large forward stateroom. Crew quarters with crew mess, captain’s cabin and en-suite, twin bunk cabin and bathroom. A Beach club area replaces the garage and is fitted with a dining area and kitchenette and access to crew cabin facilities.





For more information, please contact your local distributor
<https://www.princessyachts.com/our-craft/x-class/x95/>