

# Specifications

HP / kW **90 / 67 115 / 86**

Engine type Inline 4

Displacement (L) 2.1

Full throttle RPM 5000-6000

Fuel induction system Computer Controlled Multi-Port Electronic Fuel Injection (EFI)

Alternator amp / Watt 35 amp / 441 watt with water-cooled voltage regulator

Recommended fuel Unleaded Regular 87 Octane Minimum (R+M/2) or 90 RON 10% Ethanol Maximum

Recommended oil Mercury FourStroke Oil 10W-30

Engine protection operator warning system SmartCraft Engine Guardian

Compatible with SmartCraft digital technology Yes

Starting Smart Start Electric

Steering Big Tiller Compatible  
Electro-Hydraulic Power Steering Optional on Duals  
Dual Cable Mechanical  
Hydraulic power steering

Shaft length 20" / 508 mm 25" / 635 mm

Gearcase ratio 2.38:1

Dry weight \*Lightest model available 363 lbs / 165 kg

Bore and stroke 3.5 x 3.2" / 90 x 81 mm

Ignition SmartCraft ECM 70 Digital Inductive

Fuel system Electronic Fuel Injection (EFI)

Cooling system Water-cooled with thermostat

Gear shift F-N-R

Trim system Power Trim

Exhaust system Through prop

Counter Rotation Available

Color Phantom Black



## 90 & 115 hp Command Thrust

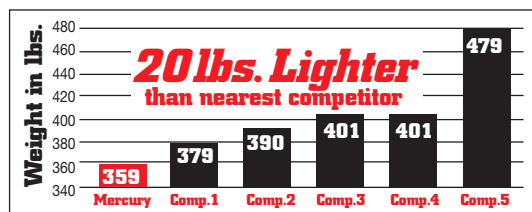
***Delivers More Power  
With Less Fuel & Noise***





## 90 & 115hp Command Thrust

### Lightweight & Fuel Efficient.



Mercury's world-renowned engineering team has packed incredible power into these lighter, compact four-cylinder single-overhead-cam engines. The 115hp weighs 20 pounds

less than its closest four-stroke competitor, making it the world's lightest low-emissions outboard in its power range.

Dry weight specification is for the lightest-version model. Comparative weights refer to base engines without oil, propeller or integral steering cylinder. Weights based on Owner's Manual specifications.

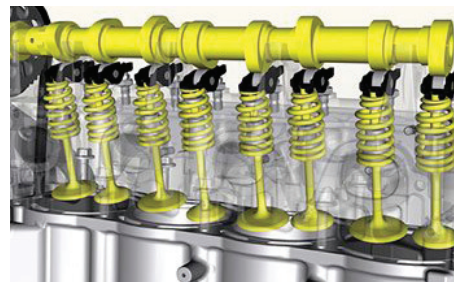
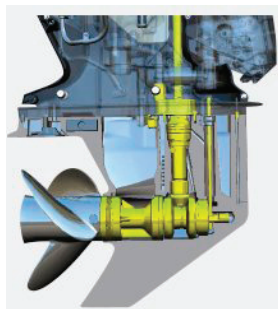
### Counter-Rotation.

Do you like to boat offshore even though you're not in the market for a big boat? For the first time, Mercury is offering a 115hp FourStroke with left-hand rotation. Two of these mid-range monsters on your transom provide the maneuverability and get-home safety of higher-horsepower twins at a price that's easier on your wallet. Unlike competitive dual 115hp engines, dual 115 Mercury FourStrokes are Command Thrust models, which swing V6-class propellers, such as Enertia series to deliver improved acceleration and better boat control in rough water.



### Bigger Footprint.

The larger Command Thrust gearcase creates a bigger footprint in the water, which provides more leverage to control your boat. The larger torpedo, combined with a bigger-diameter prop, can lift a heavy boat onto plane more easily and hold it there at lower speeds without impacting top speed.



### Worry-free.

The same lifetime maintenance-free valvetrain design found in our 150 FourStroke engines makes the 75-115hp FourStroke outboards incredibly durable.

### Powerful & Efficient.

Less weight and high displacement mean Mercury's new 75 - 115 FourStrokes generate abundant torque and immediate power. Because they don't have to work as hard as heavier engines or those with lower displacement, these engines make boats plane faster, accelerate better and provide optimal fuel efficiency at cruising speed.



### Quiet & Smooth.

Exclusive technology such as Mercury's Focused Engine Mounting System and Tuned Idle Exhaust offers reductions in overall operational noise and engine related hull vibration. The result is an ultra-smooth, quiet ride.

