

STEBER™



28

RECREATIONAL FISHING
VESSEL



WWW.STEBER.COM.AU

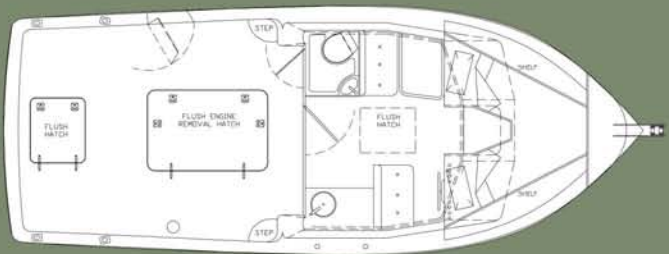


28

RECREATIONAL FISHING
VESSEL

Specifications

Length overall:	8.4 m
Measured length:	8.3 m
Waterline length:	7.45 m
Beam at Transom:	2.98 m
Beam amidships:	3.32 m
Cockpit Floor Area:	10 m ²
Draft:	0.8 m
Displacement (loaded):	4.5 Tonnes
Fuel capacity:	500 L
Water tank capacity:	50 L
Max Speed (loaded):	24.0 Knots
Engine HP:	1 x 330HP VOLVO D6.330 Diesel Engine



STEBER INTERNATIONAL
STEBERCRAFT PTY. LTD.

ABN 99 000 522 163



PO Box 90 Taree NSW 2430

6 Elizabeth Avenue - Taree NSW 2430 Australia

Phone +61 2 6552 2577 Fax +61 2 6551 0344

Email mail@steber.com.au Web www.steber.com.au

S38-10-10